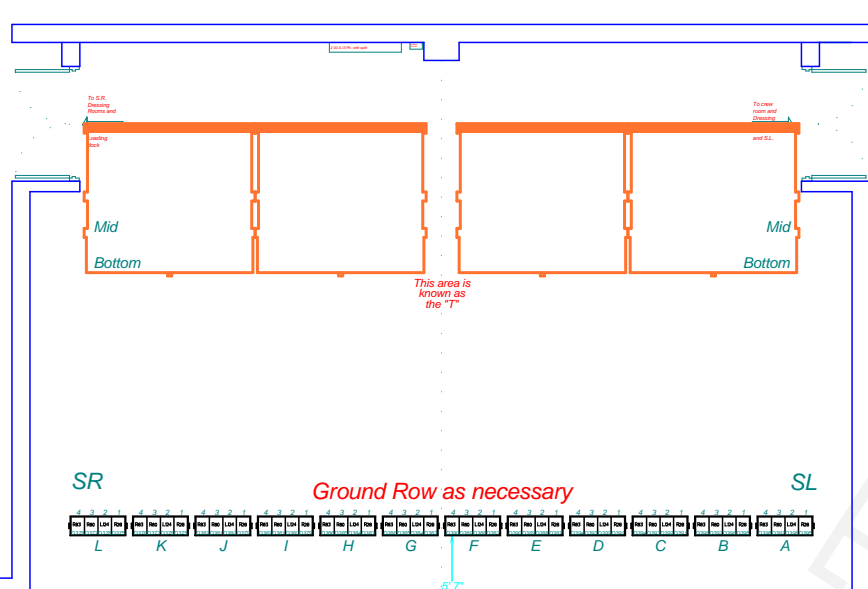
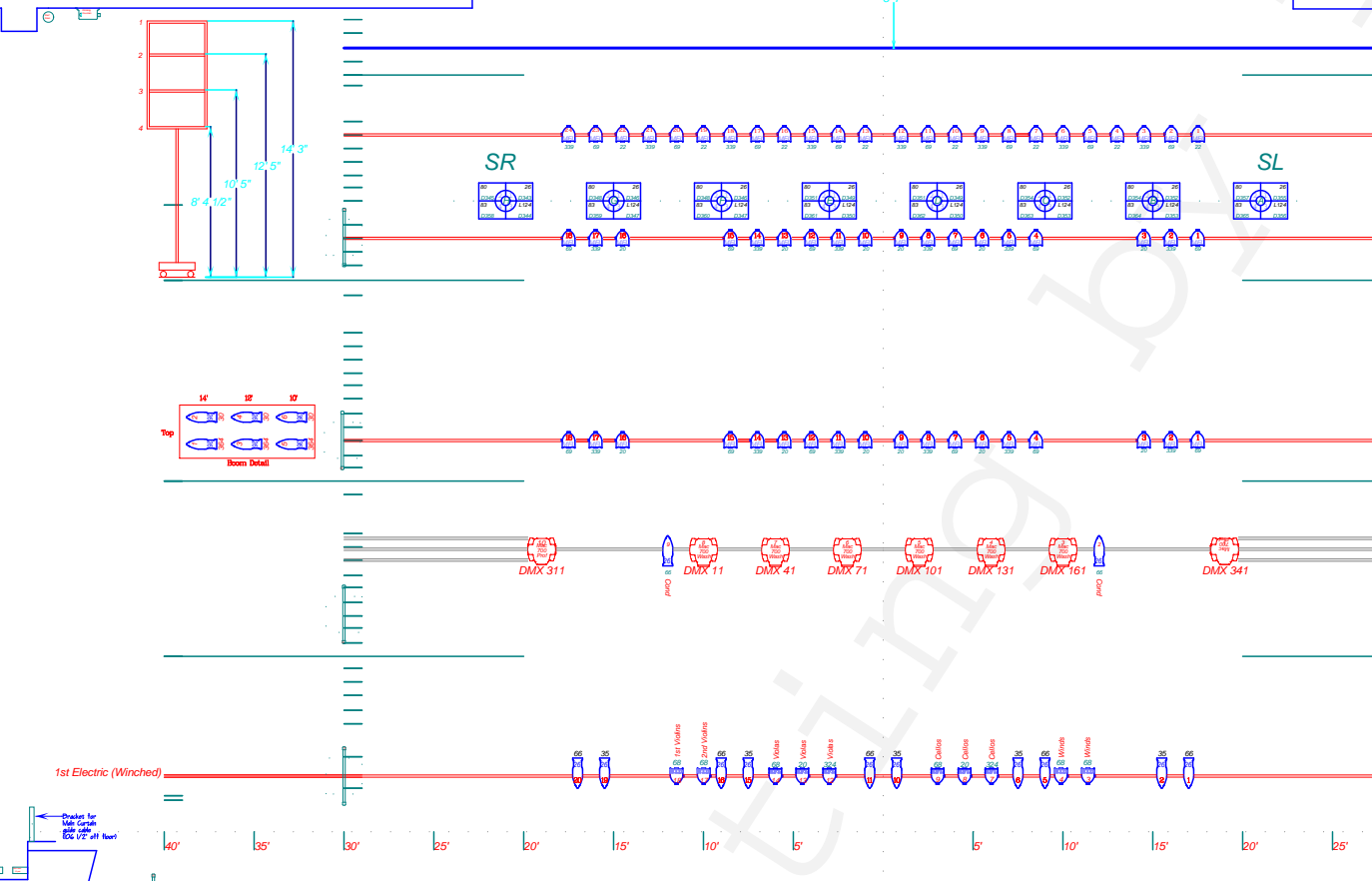


HYNES



- 55 (45' 2")
- 54 (Black Traveller) (445')
- 53 (Cyclorama) (437')
- 52 (4210')
- 51 (#4 Legs) (421')
- 50 (#4 Border) (416')
- #4 Concert Ceiling
- 48 Pipe 40x10
- 47 #6 LX-24 (389')
- 46 (381')
- 45 (373')
- 44 (366')
- 43 (359')
- 42 (352')
- 41 Pipe 30x18 (351')
- 40 (#4 LX-24) (344')
- 39 (#4 LX-24) (337')
- 38 (330')
- 37 (Black Traveller) (318')
- 36 (#3 Legs) (308')
- #3 Concert Ceiling
- 33 (279')
- 32 (271')
- 31 (263')
- 30 (256')
- 29 (249')
- 28 (241')
- 27 Pipe 25x18 (234')
- 26 (#3 LX-24) (226')
- 25 (219')
- 24 (211')
- 23 (203')
- 22 (#2 Legs) (196')
- #2 Concert Ceiling
- 19 (167')
- 18 (160')
- 17 (151')
- 16 (143')
- 15 (137')
- 14 (129')
- 13 (121')
- 12 (114')
- 11 (106')
- 10 (#1 Legs) (99')
- #1 Concert Ceiling
- 9 (#1 Border) (91')
- 8 (84')
- 7 (77')
- 6 (69')
- 5 (61')
- 4 (53')
- 3 (45')
- 2 (#1 LX-24) (37')
- 1 B (20')
- 1 A (Framing Border) (19')



Lighting Key

- Selecon Pacific 5.5"-13"(9)
- 19" Source 4(36)
- 14" Source 4(36)
- 10" Source 4(36)
- Strand SL(19"-16, 26"-78, 36"-62, 50"-10)
- Strand SL 10"(6)
- Strand SL 5"(4)
- Strand Zoom SL 15"-32"(24)
- PAR 64(24)
- Source 4 PAR(90)
- MAC 700 Wash(8)
- MAC 700 Profile(8)
- MAC 600 eNT(10)
- Ianniro Iris 4(RGB)(8)
- Altman Ground Cyc (RGB)(12)

THE CENTRE IN THE SQUARE
Stage Floor Plan
Incl:
FOH Lighting & House Hang
Date: 3/17/11
Drawn: J. Hynes